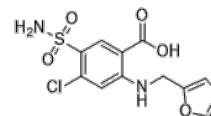


Product Name : Furosemide
Cat. No. : PC-24730
CAS No. : 54-31-9
Molecular Formula : $C_{12}H_{11}ClN_2O_5S$
Molecular Weight : 330.74
Target : Na-K-Cl Cotransporter (NKCC)
Solubility : 10 mM in DMSO



Biological Activity

Furosemide is a potent and orally active inhibitor of Na⁺/K⁺/2Cl⁻ (NKCC, encoded by SLC12A1 and SLC12A2) cotransporter NKCC1 and NKCC2, is also a GABAA receptors antagonist and displays 100-fold selectivity for α6-containing receptors than α1-containing receptors.

References

C M Gillen, et al. J Biol Chem. 1996 Jul 5;271(27):16237-44.

S A Thompson, et al. Mol Pharmacol. 1999 Jun;55(6):993-9.

Caution: Product has not been fully validated for medical applications. Lab Use Only!

E-mail: tech@probechem.com